

# iPGARD™



## Advanced 4/8 Port Secure KM Switch

### USER MANUAL

SKMN-4S	4-Port Secure KM with Audio
SKMN-4S-P	4-Port Secure KM with Audio and CAC Support
SKMN-8S	8-Port Secure KM with Audio
SKMN-8S-P	8-Port Secure KM with Audio and CAC Support

# TABLE OF CONTENTS

TECHNICAL SPECIFICATIONS_____	3
WHAT'S IN THE BOX?_____	4
SECURITY FEATURES_____	4
SKMN FRONT AND REAR_____	4
INSTALLATION_____	5
INITIAL SETUP_____	7
SINGLE-HEAD MODE KM SWITCHING_____	7
MULTI-HEAD MODE KM SWITCHING_____	8
HOTKEY COMMANDS_____	8
DISPLAY TOPOLOGY CONFIGURATION_____	9
LIMIT INPUT PORTS CONFIGURATION_____	9
CAC INSTALLATION: COMMON ACCESS CARD, SMART CARD READER_____	10
CAC PORT CONFIGURATION_____	10
AUDITING: Dumping the Event Log via User Menu Options_____	11
RESET: Restore Factory Default_____	11
LED's BEHAVIOR_____	12
SYSTEM OPERATION_____	13
TROUBLESHOOTING_____	13
TECHNICAL SUPPORT_____	13
LIMITED WARRANTY STATEMENT_____	14

## TECHNICAL SPECIFICATIONS

VIDEO	
Signal Type	USB 1.1 and 1.0 Keyboard and Mouse only. USB 2.0 for CAC connection (P models only)
Type A to B	SKMN-4S (4)
	SKMN-4S-P/SKMN-8S (8)
	SKMN-8S-P (16)
User Console Interface	(2) USB Type-A for keyboard and mouse connection only
	(1) USB Type-A for CAC connection (P models only)
AUDIO	
Input	(4)/(8) Connector Stereo 3.5mm Female
Output	(1) Connector Stereo 3.5mm Female
POWER	
Power Requirements	12VDC 2A (minimum) power adapter with center-pin positive polarity. 8 port models require a 12VDC 3A (minimum) power adapter with center-pin positive polarity.
ENVIRONMENT	
Operating Temp	32° to 104° F (0° to 40° C)
Storage Temp	-4° to 140° F (-20° to 60° C)
Humidity	0-80% RH, non-condensing
CERTIFICATIONS	
Security Accreditation	Common Criteria Validated To NIAP, Protection Profile PSS Ver. 3.0
OTHER	
Emulation	USB 1.1 and USB 2.0 Compatible
Control	Front Panel Buttons

## WHAT'S IN THE BOX?

SKMN Unit	4/8-port Secure KM Switch
PS12VDC2A or PS12VDC3A	12VDC 2A (minimum) power adapter with center-pin positive polarity. 8 port models require a 12VDC 3A (minimum) power adapter with center-pin positive polarity.
User Manual	

## SECURITY FEATURES

### Anti-Tamper Switches

Each model is equipped with internal Anti-Tamper switches, which sense attempts to open the device enclosure. Once the system identifies such an attempt, all the front panel LED's will flash rapidly and the unit will become useless by shutting off connection with all attached PCs and peripherals disabling any functionality.

### Tamper-Evident Seal

The enclosure of the unit is protected with a tamper-evident seal to provide a visual evidence if the unit has been opened.

### Protected Firmware

The controller of the unit has a special protection feature that prevents reprogramming or reading the firmware.

### High Isolation on USB Channels

Opto-isolators are used in the unit to keep USB data paths electrically isolated from each other, providing high isolation and preventing data leakage between ports.

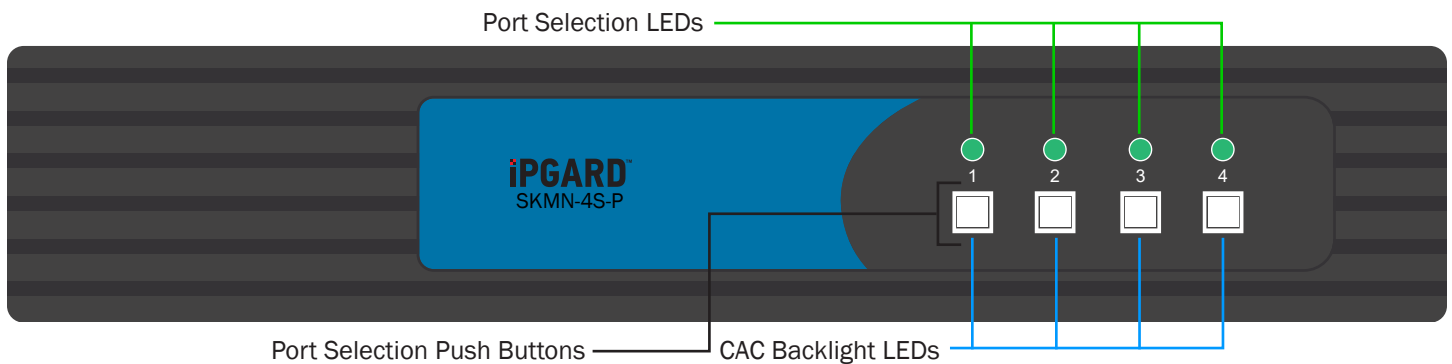


Figure 4-1: SKMN-4S-P Front panel

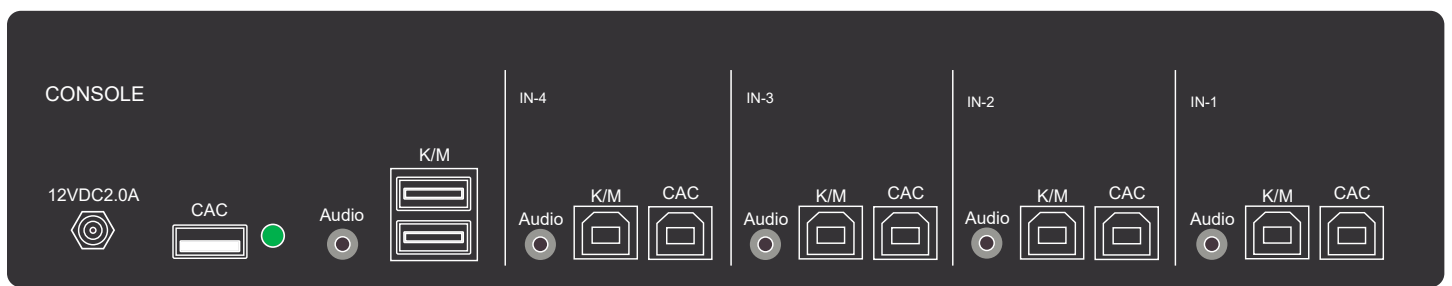


Figure 4-2: SKMN-4S-P Rear panel

# INSTALLATION

## SYSTEM REQUIREMENTS

- iPGARD Secure PSS is compatible with standard personal/portable computers, servers or thin-clients, running operating systems such as Windows or Linux.
- The peripheral devices that are supported by the KM are listed in the following table:

Console Port	Authorized Devices
Keyboard	Wired keyboard and keypad without internal USB hub or composite device functions, unless the connected device has at least one endpoint which is a keyboard or mouse HID class, KVM/KM extender;
Audio out	Analog amplified speakers, Analog headphones, Digital audio appliance.
Mouse/Pointing Device	Any wired mouse or trackball without internal USB hub or composite device functions, Touch-screen, Multi-touch or digitizer, KVM/KM extender.
User Authentication Device	Smart-card reader, PIV/CAC reader, Token or Biometric reader*

\*TOE -P and -X models only

Table 5-1

## CONNECTING THE SKMN

- Ensure that power is turned off or disconnected from the unit and the computers.
- Use a USB cable (Type-A to Type-B) to connect a USB port on each computer to the respective USB ports of the unit.
- Optionally connect a stereo audio cable (3.5mm to 3.5mm) to connect the audio output of the computers to the AUDIO IN ports of the unit.
- Connect a USB keyboard and mouse in the two USB console ports.
- Optionally connect stereo speakers to the AUDIO OUT port of the unit.
- Optionally connect CAC (COMMON ACCESS CARD, SMART CARD READER) to the CAC port in the user console interface. For -P Models.
- Power on the KM by connecting a 12VDC power supply to the power connector, and then turn on all the computers.

**Note:** The computer connected to port 1 will always be selected by default after power up.

**Note:** You can connect up to 4 computers to the 4 port KM and up to 8 computers to the 8 port KM.

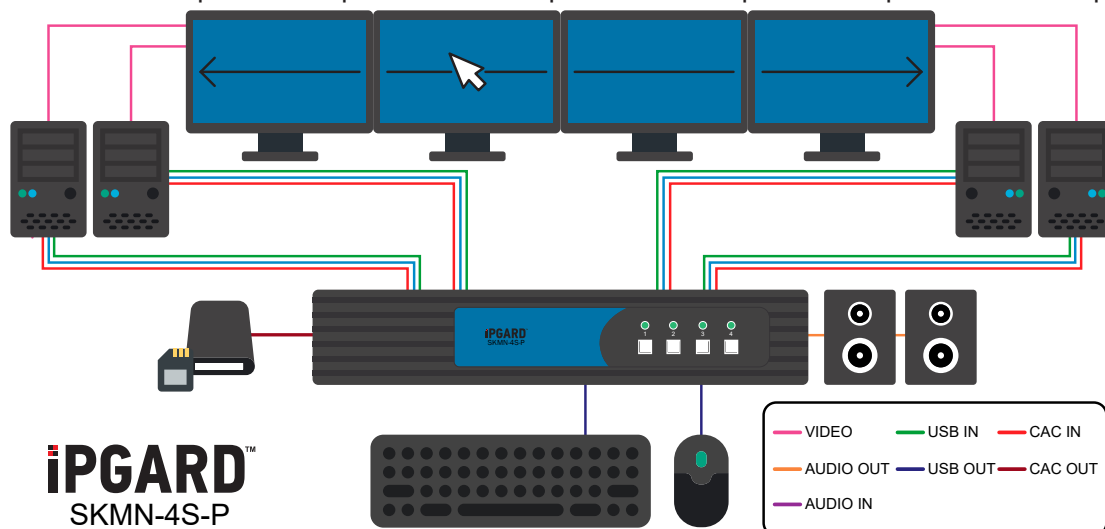


Figure 5-1: SKMN-4S-P

## INSTALLATION (Continued)

### **IMPORTANT WARNINGS - For security reasons:**

- This product does not support wireless devices. Do not attempt to use a wireless keyboard or a wireless mouse with this product.
- This product does not support keyboards with integrated USB hubs or USB ports. Only use standard (HID) USB keyboards with this device.
- This product does not support microphone audio input or line input. Do not connect any microphones or headsets with microphones to this device.
- Connection of authentication devices (CAC) with external power sources is prohibited.

# INITIAL SETUP

After connecting all devices to the SKMN, a display topology configuration and display mode must be chosen. By default, SKMN is configured to Single-Head mode and a topology with 4 screens arranged horizontally starting with port 1 on the most left-hand side.

The installation setup must match one of SKMN's predefined display topology configuration. This can be selected through keyboard hotkey commands. Please refer to the "Display Topology Configuration" for the available display topologies. If one or more of the input computers have multiple displays, Multi-Head Display Mode must be selected. Otherwise, select Single-Head mode. Please refer to the table below for the commands.

COMMANDS	HOTKEYS
Single-Head Display Mode	CTRL + CTRL + K + S
Multi-Head Display Mode	CTRL + CTRL + K + M

To activate the hotkey sequence, press the CTRL key twice and then enter the desired hotkey commands.

Table 7-1

## SINGLE-HEAD MODE KM SWITCHING

In addition to traditional channel switching by buttons located on the front panel, KM also supports cursor control of selected channels. This technology allows seamless switching between computers by moving the mouse cursor from one display to another. Users can effortlessly switch computers for faster productivity.

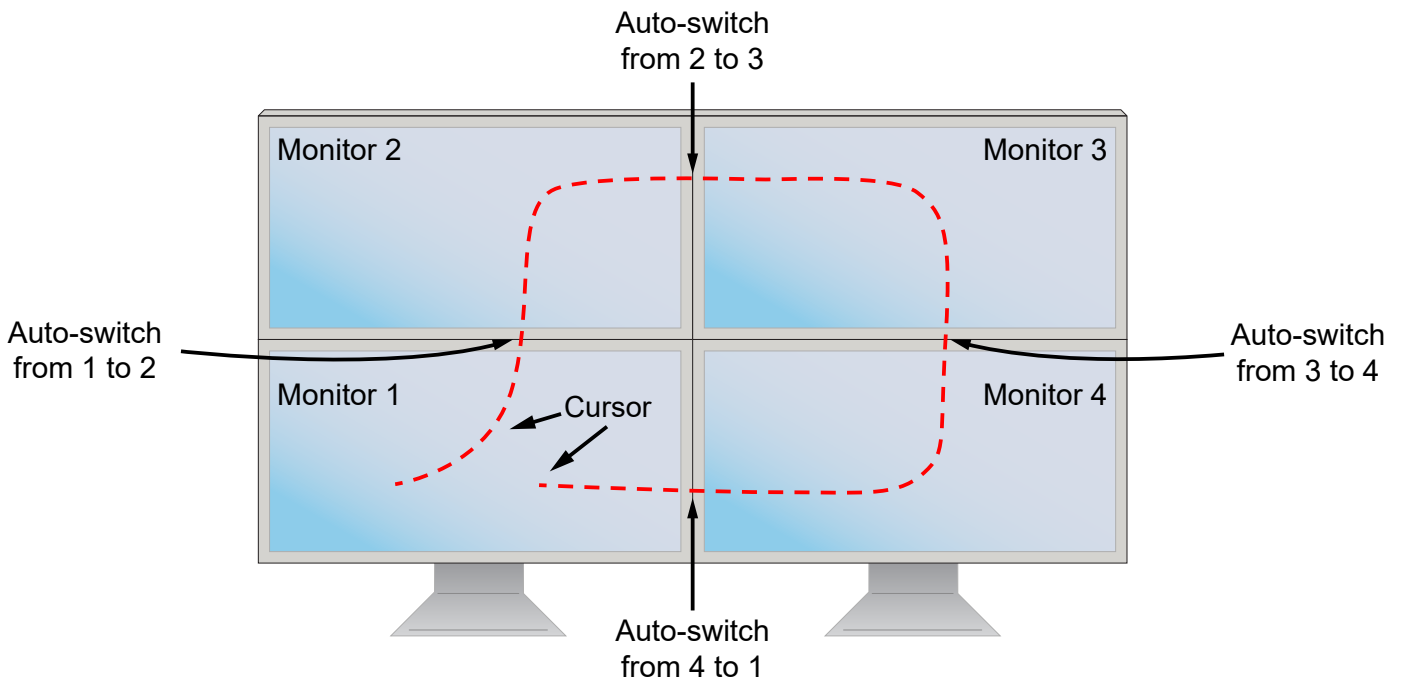


Figure 7-1

## MULTI-HEAD MODE KM SWITCHING

When using computers with multiple displays, cursor control of selected channels allows switching between computers through the use of simple mouse clicks and gestures. No device driver is required. Simply press the scroll wheel twice and then move the mouse in the direction of the channel you desire to switch to.

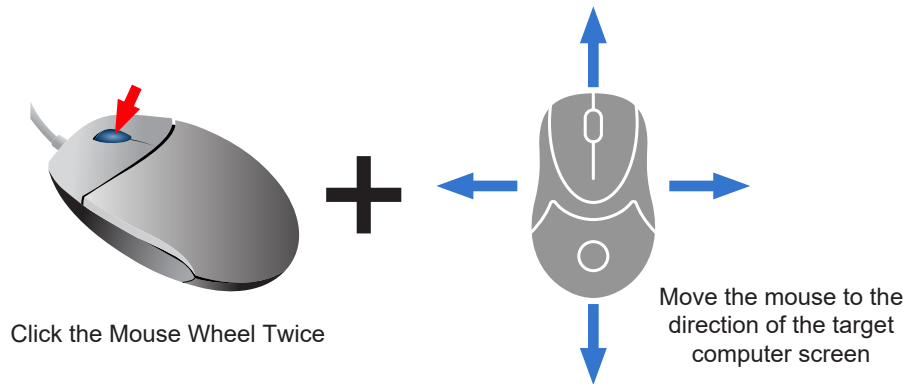


Figure 8-1

**Note:** This feature only works in Multi-Head display mode.

## HOTKEY COMMANDS

The Hotkey command is a keyboard sequence used to trigger an action on the SKMN through the use of the keyboard connected on the USB port of the SKMN. To activate the hotkey sequence, press the CTRL key twice and then enter the desired hotkey commands.

**Note:** All commands can use upper and/or lower case characters

COMMANDS	HOTKEYS
Single-Head Display Mode	CTRL + CTRL + K + S
Multi-Head Display Mode	CTRL + CTRL + K + M
Display Topology (multiple rows)	CTRL + CTRL + H(1–4), (1-8) for SKMN-8P
Limit Input Ports (one row only)	CTRL + CTRL + W(1–4), (1-8) for SKMN-8P
Cursor Rolling (roll past display borders up, down, left, and right)	CTRL + CTRL + O (0–OFF) or (1–ON)

Table 8-1

**Note:** Display Topology specifies the number of horizontal columns. The number of vertical rows is calculated in the software by  $4/n$  columns.



## DISPLAY TOPOLOGY CONFIGURATION

The SKMN has a configurable display topology configuration that can be easily activated through keyboard hotkeys. No software or drivers are required to configure the display topology.

**Note:** Hotkey CTRL+CTRL command allows for multiple rows.

(1) Hotkey Command: “CTRL + CTRL + H + 4 + ENTER”

1	2	3	4
---	---	---	---

(2) Hotkey Command: “CTRL + CTRL + H + 2 + ENTER”

1	2
3	4

(3) Hotkey Command: “CTRL + CTRL + H + 3 + ENTER”

1	2	3
---	---	---

(4) Hotkey Command: “CTRL + CTRL + H + 1 + ENTER”

1
2
3
4

Each of the cells shown represents a display or multiple displays from a computer.

**Notes:**

Cursor control of selected channels can only be used in Single-Head display mode.

- Multi-Head display mode switching must be used if any of the four computers have multiple displays.

## LIMIT INPUT PORTS CONFIGURATION

Hotkey Commands: CTRL, CTRL W(X) commands (allows one row only):

W4<CR>

1	2	3	4
---	---	---	---

W3<CR>

1	2	3
---	---	---

*Note: Port 4 N/A*

W2<CR>

1	2
---	---

*Note: Ports 3, 4 N/A*

W1<CR>

1
---

*Note: Port 2-4 N/A*

**Note:** Limit Input Ports commands reset Display Topology configuration

## CAC (COMMON ACCESS CARD, SMART CARD READER) INSTALLATION

The following steps are intended for the system administrator or IT manager only.

If you have the optional CAC ports there will be 2 ports on a 2 host ports KM and 4 ports on a 4 host ports KM.

CAC connection to the computer requires a USB cable connection separate from the keyboard and mouse. This allows the CAC to be connected independently from the keyboard and mouse. It also allows the user to select whether CAC for a certain computer is supported or not.

1. Ensure that power is turned off or disconnected from the unit and the computer.
2. Use a USB cable (Type-A to Type-B) to connect a USB port on a computer to its respective CAC USB ports on the KM. Do not connect the USB cable if CAC functionality is not needed for that computer.
3. Connect a CAC (smart card reader) to the CAC port in the user console interface.
4. Power on the KM by connecting a 12VDC power supply to the power connector, and then turn on all the computers.
5. To disable CAC for any channel (all CAC ports are enabled as default), use the front panel buttons to switch the KM to the channel whose CAC mode you wish to change. Once the channel is selected, the button LED for this specific channel should be on (CAC port enabled). Press and hold the button for 3 seconds until the button LED turns off. The CAC port is now disabled for this channel.
6. To enable CAC for any channel, use the front panel buttons to switch the KM to the channel whose CAC mode you wish to change. Once the channel is selected, the button LED for this specific channel should be off (CAC port disabled). Press and hold the button for 3 seconds until the button LED turns on. The CAC port is now enabled for this channel.

## CAC PORT CONFIGURATION

The following steps are intended for the system administrator and operators (users).

Note: Only one computer connected to port 1 is required for this operation

CAC port Configuration is an optional feature, allowing registration of any USB peripheral to operate with the KM. Only one peripheral can be registered and only the registered peripheral will operate with the KM. By default, when no peripheral is registered, the KM will operate with any Smart Card Reader.

### Configure the CAC Port via User Menu Options

1. Open the Administration and Security Management Program.
2. Using the keyboard, press the Alt key twice and type "cnfg".
3. At this stage the mouse connected to the KM will stop functioning.
4. Enter the default username "user" and press Enter.
5. Enter the default password "12345" and press Enter.
6. Select option 2 from the menu on your screen and press Enter.
7. Connect the peripheral device to be registered to the CAC USB port in the console side of the KM and wait until the KM is reading the new peripheral information.
8. The KM will list the information of the connected peripheral on the screen and buzz 3 times when registration is completed.

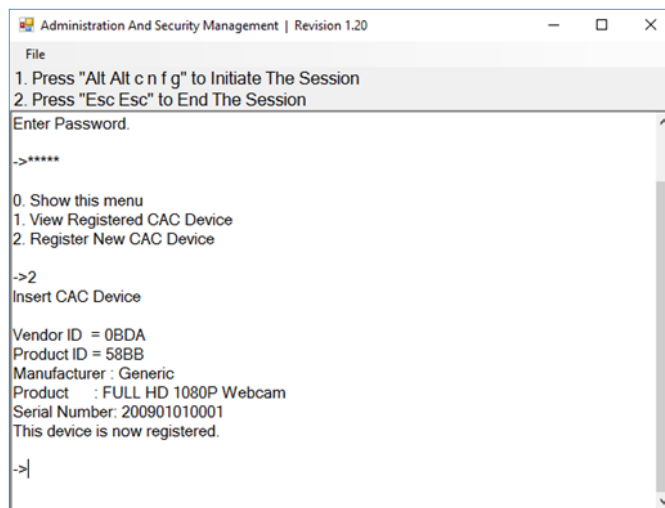


Figure 10-1: User Menu

## AUDITING: Dumping the Event Log via User Menu Options

The following steps are intended for the system administrator.

Note: Only one computer connected to port 1 is required for this operation

The Event Log is a detailed report of critical activities stored in the KM or KM memory. A comprehensive feature list and guidance for Administration and Security Management Tools can be found in the Administrator's Guide available for download from: <http://ipgard.com/documentation/>

To view or dump the Event Log:

1. Open the Administration and Security Management Program
2. Using the keyboard, press the Alt key twice and type "cnfg".
3. Enter the default admin name "admin" and press Enter.
4. Enter the default password "12345" and press Enter.
5. Request a Log Dump by selecting option 5 in the menu. (Shown in Figure 11-1)

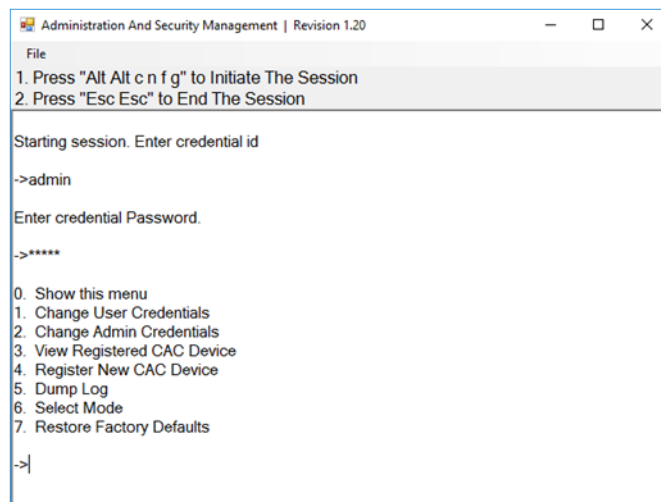


Figure 11-1

\* See Administration and Security Management Tool Guidance for detailed information.

## RESET: Restore Factory Defaults

The following steps are intended for the system administrator.

Note: Only one computer connected to port 1 is required for this operation

Restore Factory Defaults will reset all settings on the KM to their original state

- KM mode
- CAC port registration will be removed
- KM settings will be reset to factory defaults

To Restore Factory Defaults via User Menu Options:

1. Open the Administration and Security Management Program
2. Using the keyboard, press the Alt key twice and type "cnfg"
3. Enter the default admin name "admin" and press Enter.
4. Enter the default password "12345" and press Enter.
5. Select option 7 from the menu on your screen and press enter. (Menu shown in Figure 11-1)

\* See Administration and Security Management Tool Guidance for detailed information.

## LED's BEHAVIOR

User Console Interface – CAC LED:

#	Status	Description
1	Off	CAC is not connected
2	On	Authorized and functional CAC is connected
3	Flashing	Non-CAC peripheral is connected

Front Panel – Port Selection LED's:

#	Status	Description
1	Off	Non-selected port
2	On	Selected port

Front Panel – CAC Selection LED's:

#	Status	Description
1	Off	CAC port is disabled or non-selected port
2	On	CAC port is enabled

Front Panel - Port and CAC Selection LED's:

#	Status	Description
1	All Flashing	Connected peripheral to keyboard or mouse consol ports is rejected

## ***IMPORTANT!***

If all the Front Panel LED's are flashing and the buzer is beeping, the KM has been **TAMPERED** with and all functions are permanently disabled. Please contact iPGARD technical support at [support@iPGARD.com](mailto:support@iPGARD.com).

If all Front Panel LED's are on and not flashing, the POWER UP SELF TEST has failed and all functions are disabled. Check if any of the front panel port selection buttons are jammed. In this case, release the jammed button and recycle the power. If power up self test is still failing, please contact iPGARD technical support at [support@iPGARD.com](mailto:support@iPGARD.com).

## SYSTEM OPERATION

### Front Panel Control

To switch to an input port, simply push the desired input button on the front-panel of the KM. If an input port is selected, the LED of that port will turn on.

## TROUBLESHOOTING

### No Power

- Make sure that the power adapter is securely connected to the power connector of the unit.
- Check the output voltage of the power supply and make sure that the voltage value is around 12VDC.
- Replace the power supply.

### Keyboard is not working

- Check if the keyboard is properly connected to the unit.
- Check if the USB cables connecting the unit and the computers are properly connected.
- Try connecting the USB on the computer to a different port.
- Make sure that the keyboard works when directly connected to the computer.
- Replace the keyboard.

Note: The NUM, CAPS, and SCROLL Lock LED indicators on the keyboard are not supposed to light up if connected to the KM.

### Mouse is not working

- Check if the mouse is properly connected to the unit.
- Try connecting the USB on the computer to a different port.
- Make sure that the mouse works when directly connected to the computer.
- Replace the mouse.

### No Audio

- Check if all the audio cables are connected properly.
- Connect the speakers directly to the computer to verify that the speakers and the computer audio are functioning properly.
- Check the audio settings of the computer and verify that the audio output is through the speakers.

### No CAC (COMMON ACCESS CARD, SMART CARD READER)

- Check if the USB cables connecting the unit and the computers are properly connected.
- Make sure the CAC port is enabled.

## TECHNICAL SUPPORT

For product inquiries, warranty questions, or technical questions, please contact [info@iPGARD.com](mailto:info@iPGARD.com).

## LIMITED WARRANTY STATEMENT

### A. Extent of limited warranty

iPGARD, Inc. warrants to the end-user customers that the iPGARD product specified above will be free from defects in materials and workmanship for the duration of 1 year, which duration begins on the date of purchase by the customer. Customer is responsible for maintaining proof of date of purchase.

iPGARD limited warranty covers only those defects which arise as a result of normal use of the product, and do not apply to any:

- a. Improper or inadequate maintenance or modifications
- b. Operations outside product specifications
- c. Mechanical abuse and exposure to severe conditions

If iPGARD receives, during applicable warranty period, a notice of defect, iPGARD will at its discretion replace or repair defective product. If iPGARD is unable to replace or repair defective product covered by the iPGARD warranty within reasonable period of time, iPGARD shall refund the cost of the product.

iPGARD shall have no obligation to repair, replace or refund unit until customer returns defective product to iPGARD.

Any replacement product could be new or like new, provided that it has functionality at least equal to that of the product being replaced.

iPGARD limited warranty is valid in any country where the covered product is distributed by iPGARD.

### B. Limitations of warranty

To the extent allowed by local law, neither iPGARD nor its third party suppliers make any other warranty or condition of any kind whether expressed or implied with respect to the iPGARD product, and specifically disclaim implied warranties or conditions of merchantability, satisfactory quality, and fitness for a particular purpose.

### C. Limitations of liability

To the extent allowed by local law the remedies provided in this warranty statement are the customers sole and exclusive remedies.

To the extent allowed by local law, except for the obligations specifically set forth in this warranty statement, in no event will iPGARD or its third party suppliers be liable for direct, indirect, special, incidental, or consequential damages whether based on contract, tort or any other legal theory and whether advised of the possibility of such damages.

### D. Local law

To the extent that this warranty statement is inconsistent with local law, this warranty statement shall be considered modified to be consistent with such law.

# iPGARD™

## NOTICE

The information contained in this document is subject to change without notice. iPGARD makes no warranty of any kind with regard to this material, including but not limited to, implied warranties of merchantability and fitness for particular purpose. iPGARD will not be liable for errors contained herein or for incidental or consequential damages in connection with the furnishing, performance or use of this material. No part of this document may be photocopied, reproduced, or translated into another language without prior written consent from iPGARD, Inc.

20180109



**Toll Free: (888) 994-7427**

**Phone: (702) 800-0005**

**Fax: (702) 441-5590**

**2455 W Cheyenne Ave, Suite 112  
North Las Vegas, NV 89032**

**[iPGARD.COM](http://iPGARD.COM)**